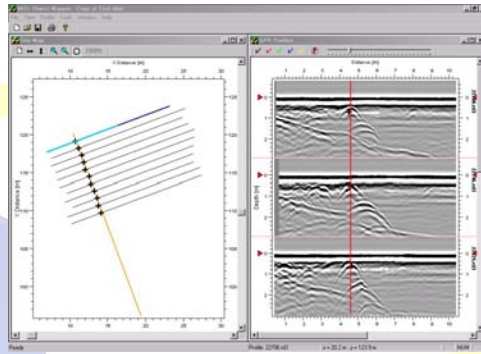




# ramac gpr

## RAMAC X3M

### RAMAC X3M™ - THE INTEGRATED RADAR CONTROL UNIT



## RAMAC X3M™

MALÅ GeoScience presents a new electronic design for a more compact and user-friendly GPR system.

The RAMAC X3M is an integrated radar control unit, fitted directly on the shielded antenna and powered externally. Compatible with the 100, 250, 500 and 800 MHz RAMAC GPR shielded antennas, this system is the smallest GPR available. The built-in electronic design makes it a low weight and compact size system, easier to assemble and operate. No fibre optic cable is required since the unit communicates directly with the XV11 monitor or laptop. Based on the flexibility and the modularity of the range of RAMAC/GPR, the RAMAC X3M is fully compatible with

the Windows based acquisition software Ground Vision.

The built-in autostacking function secures best data quality at maximum survey speed. The low power consumption gives you up to ten hours measuring time with standard battery units.

The available, optional software, allows projects to be mapped & objects can be drawn in 3D.

These features will soon make the RAMAC X3M the preferred GPR unit for all your utility or geophysical surveys.

---

## TECHNICAL SPECIFICATIONS



*Cart mounted  
RAMAC X3M with a  
250 MHz shielded  
antenna.*

### **RAMAC X3M features:**

- Compact and integrated radar unit, easy to use
- Compatible with RAMAC 100, 250, 500 and 800 MHz antennas
- Autostacking for highest data quality and optimized speed performance
- Low power consumption for extended operation time

<b>Pulse repetition frequency</b>	100 kHz (standard)
<b>Data bits</b>	16
<b>Nr of sample /trace</b>	128-8192
<b>Nr of stacks</b>	Autostacking in the range 1-32768 for optimized speed performance
<b>Signal stability</b>	< 100ps
<b>Communication interface</b>	IEEE 1284 (ECP)
<b>Communication speed</b>	> 700 kb/s
<b>Data transfer rate</b>	40-400 kB/s at 4Mbit/s
<b>Acquisition mode</b>	distance/time/manual
<b>Power supply</b>	External 12V DC battery
<b>Operating time</b>	> 10hours with the standard battery accessories
<b>Charger</b>	Quick charger, automatic charge cycle 110-240 VAC input
<b>Charge time</b>	3-5h (80-100%).
<b>Measuring wheel</b>	Standard RAMAC/GPR trigger device
<b>Software</b>	Compatible with Ground Vision
<b>Antennas</b>	100, 250, 500 & 800 MHz RAMAC/GPR shielded antennas
<b>Dimensions</b>	310 x 180 x 30 mm (12.2 x 7 x 1.2 in)
<b>Weight</b>	1.7 kg (3.7 lb)
<b>Operating temperature</b>	-20°C to +50°C
<b>Environmental</b>	IP 67